

cultivate commissions

Report 2025



Part of Into the Light Durham Place Partnership
cultivating a more balanced, inclusive and sustainable
creative and cultural environment that can support
communities and local economies to grow.

Contents

03	Introduction
04	Context
06	The Cultivation Process
10	The Creative Practitioners
12	Cultivate Commissions in numbers
14	Key themes: Nurturing Relationships
16	Building Space and Conditions for Creativity
18	Developing and Growing the Cultural Sector
20	Harvesting the Benefits
24	Continuing the Cycle
28	Find out more and Acknowledgements
29	Glossary of terms



Introduction

Somewhat like a carefully tended garden, potted plant, or landscape, the Cultivate Commissions project, led by No More Nowt and Northern Heartlands, aims to develop fertile ground for creative growth and as a result of this work increase cultural participation across County Durham.

Cultivate Commissions has been designed to support creative practitioners to work with and alongside communities in County Durham to increase participation in arts and creative activity that has a positive impact on communities.

Each Cultivate Commission focuses on three keys objectives:

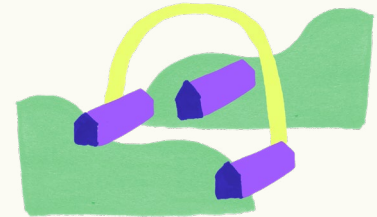
Increasing participation



Developing creativity



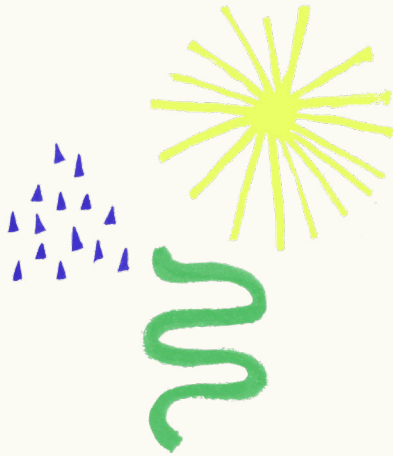
Encouraging a sense of pride



This report examines how through the Cultivate Commissions project in 2024-25 we have supported seeds to grow, nurtured emerging relationships and collaborations, and harvested the impact of this collective effort.

By using the metaphor of cultivation throughout this programme and report, we can better understand the processes that have unfolded and the approach we have taken to cultural participation, creativity and engagement across our communities in County Durham.

Context



Before planting begins, we benefit from understanding the conditions and climate.

The Cultivate Commissions project emerged in response to identified needs within Durham’s cultural landscape and built on engagement and consultation work that stemmed from the development of the City of Culture 2025 development process, particularly the Kickstart Commissions project, which allowed 10 creatives and communities with seeds of ideas connected to the bid, to plant and grow them into saplings.

Cultivate Commissions is one of eight projects that form the Into the Light Durham Place Partnership Programme. Into the Light is a place-based creative collaboration that drives long-lasting growth in County Durham. It cultivates talent, widens access to creative education, enhances the skills of the cultural workforce, and breaks down barriers to working in the creative industries.

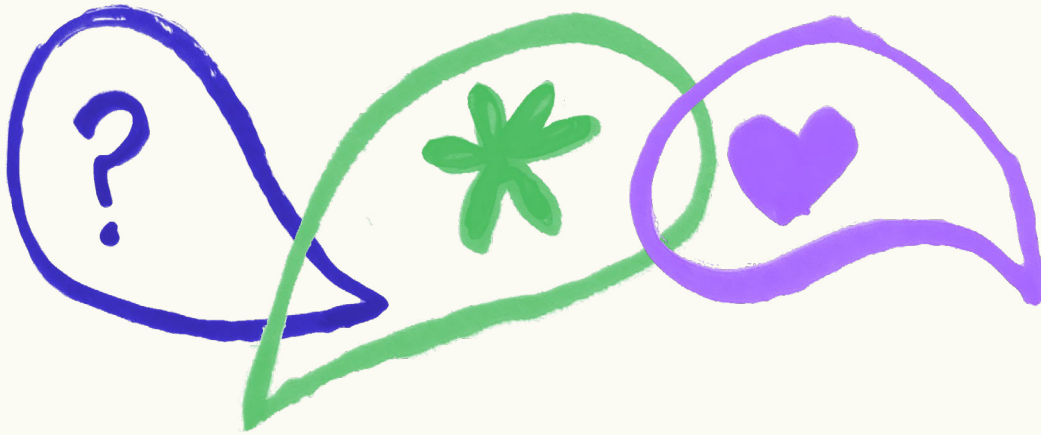
The Into the Light Durham Place Partnership focuses on three strands of work to achieve this vision, each interconnected:

**Cultivate
Engage
Grow**



Funders and partners for this initiative include Arts Council England, Durham County Council, Durham University, Culture Durham, and Visit County Durham. In 2024-25, Cultivate Commissions were part-funded by the UK Government through the UK Shared Prosperity Fund.

The Into the Light Durham Place Partnership recognises the need to cultivate a more balanced, inclusive and sustainable creative and cultural environment. The existing cultural ecosystem has perhaps developed unevenly over time; whilst some areas flourish others can appear undernourished and possibly not yet in full bloom. The Cultivate Commissions project was designed as a deliberate intervention that supports creative practitioners and the seeding, germinating and harvesting of new ideas, ways of working with communities and the tending of conditions for creativity and positive change to flourish.



Some of the questions that Cultivate Commissions asks:

How can we encourage people to feel more confident in expressing their creativity?

How can creative practitioners be supported to connect with communities and help develop this confidence?

How can we support this in a way that reflects the people and the place and is designed and created together?

How can this work support growth within the sector and across our communities?

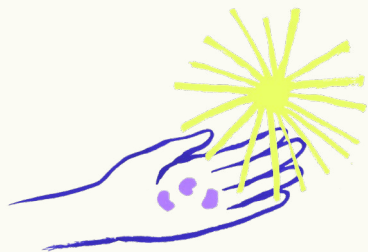
How can we create the opportunities for increased access to arts and culture beyond the existing or 'usual' cultural infrastructure?

How might the practice and learning from this project help cultivate a more balanced, inclusive and sustainable creative and cultural environment that can support communities to flourish?

The Cultivation Process

Project leads, No More Nowt and Northern Heartlands made careful preparations and carried out the groundwork that allowed a programme to be designed, to build on existing strengths, and support the aim and objectives of the Cultivate Commissions project, Into the Light and wider aspirations for cultural development and its possible impact across the county.

Three types of Commission were developed and awarded:



Seed

This commission aims to support the initial stages of creative ideas that practitioners wish to explore or test. The overarching goal is to seed ideas that could increase creativity and arts participation in County Durham and enhance a sense of pride.

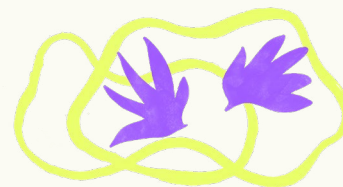
x10 at £2000



Germinate

This commission is tailored for creative practitioners who have already tested an idea and possess existing connections within communities or community organisations within the county to support them in implementing the delivery of a project they wish to develop further.

x3 at £5000



Harvest

This commission is tailored for creative practitioners who have an idea they want to test or develop and who have existing connections within communities or community organisations to support them in implementing the delivery of a project in one or more of the following specific places in County Durham: Durham City, Peterlee, Shildon, Stanley, Weardale or Digital engaged community in the County.

x7 at £5000

Scattering seeds

In 2024-25 the application process was an open call that invited creative practitioners or arts organisations that live or work in County Durham to apply. The applications were assessed against the Cultivate Commissions criteria that was shared through the application process and 20 applications were selected with a careful balance between the three commissioning types.

No More Nowt and Northern Heartlands openly promoted and publicised this opportunity for around two months across a range of platforms, networks and mail lists.



Growing ideas

Supported by Create North, No More Nowt and Northern Heartlands developed and delivered a series of 'Cultivate Ideas' sessions to:

- Support an understanding of the aims of the Cultivate Commissions project
- Offer practical support for creative practitioners with the application process
- Create an opportunity for collective professional development

Application guidance notes were created, shared and made available in a range of formats throughout the process and applications themselves were accepted in a range of formats to suit a range of needs. Four 'Cultivate Ideas and Find out More' sessions were programmed and delivered in person across the county and online to support the application process during May - July.

The application process was highly competitive and oversubscribed with 131 applications requested and 59 applications received. A Community Panel was engaged to shortlist successful creative practitioners and organisations in August. This led to 20 successful applications, creative practitioners being contracted in September, and project activity taking place across Autumn 2024 to early Spring 2025 together with County Durham communities.

Those who were not successful on this occasion were informed, and feedback and signposting opportunities were made available.



Nurturing practitioners

Creative practitioners were contracted with a two-part payment schedule to reduce cash flow challenges and help enable work to take place over the 6-month activity period, with the largest portion of the commission coming at the point of contracting. All requirements for monitoring and evaluation were set out at the beginning of the project and a timeline of opportunities including reflection sessions, the LOVE Culture event and reporting deadlines were established from the outset.

Both lead partners, No More Nowt and Northern Heartlands brought valuable experience, insight and understanding to help support the creative practitioners and project delivery overall including significant experience of open call commissioning in a community based context. Creative practitioners were offered ongoing information, support and guidance, including signposting to contacts, networks and additional opportunities.

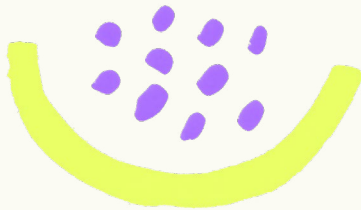
Reflection sessions and professional learning were built in throughout the project. Lead partners provided a structured framework for discussions, sharing of ideas and collaborative learning. Insights and learning from the commissions were also shared and discussed with partners and funders of Into the Light to help inform and advocate for further cultural development activity in County Durham.



Celebrating growth

This project, and the outcomes from it, form part of wider ambition for arts and culture for County Durham. To help shape and influence this, moments of reflection, celebration and sharing were built into the project programme.

This included an event called 'LOVE Culture' which provided the opportunity for creative practitioners and partners to come together to share learning and experiences. The full-day event took place once all project delivery activity had been completed. The event included participatory activity that helped explore the role and attributes of both creative facilitator and participant. This event was not only a sharing of experiences and discoveries but also helped articulate the critical role that artists and creative practitioners can play in cultural development and its transformational impact in a particular locality.



The Cultivate Commissions project provided an opportunity for creative practitioners to explore in practice and reflect on ways of working within the framework of an allocated time/budget. This unique action learning opportunity established valuable space for the cohort to discuss successes and explore possible solutions to potential challenges. This supportive network encouraged individual growth and development, allowing for the sharing of ideas, information and connection that could accelerate cultural participation and the impact this can have for the people and places we live in, work in and enjoy across the region.



Amplifying Work

No More Nowt and Northern Heartlands worked collaboratively with commissioned individuals and their community partners to share their projects across their social media, allowing them to reach new audiences, participants and stakeholders. Additionally 5 of the commissioned cohort were able to access a paid opportunity to feature in a case study film and have their work professionally photographed. The wider cohort, as well as broader stakeholders added their voices to film work.



The Creative Practitioners

No More Nowt and Northern Heartlands commissioned 20 creative practitioners

Seed Commissions

Rose Cottage CIC

Colours of Us

rosecottagecommunityhub.co.uk



Emory Southwick

Pride of Place: A queer story of County Durham

emoryartmodel.co.uk

Georgia Goodson-Platts

Love Letters to the Self:

Made in Durham

@geeplatts



Cloe Sparrow

Collieries and Creativity: Bridging Generations in Bowburn

@cloesparrowart

Matt James Smith

Ghost Train

mattjamesmith.com/ghost-train



Scarlet Hall

Play Us a River

@scarletsumagr



Debbie Todd

When am not at hyem

debbietodd.co.uk



Elaine Vizor

Our Place

@vizorelaine



Zara Worth

New Shrines (Hope)

zaraworth.com



Alice Kelly

Wild Ones

@alice.ssnaps

Germinate Commissions

Hannah Guy
The Village Circus Project
@ [@newcastlecircusarts](#)



Lizzie Lovejoy
Trailways:
Tales from the Rails
lizzielovejoy.com



Sarah Stamp
Proggy Project
@ [@vonstamp](#)

Harvest Commissions

**Joe Bunce/Paperfinch Theatre
(Peterlee)**
The Machine
@ [@paperfinchtheatre](#)



Citizen Songwriters (Shildon)
The Streets That Made Shildon
citizensongwriters.org

Daisy Arts (Shildon)
POSTCARDS from...
@ [@daisyartscic](#)



Elysium Theatre (Durham City & Peterlee)
Shakespeare For All
elysiumtc.co.uk

Ruth Flowers (Durham City)
Rivers Within
ruthflowers.co.uk



Kate Fox (Durham City)
A Happy Place
katefoxwriter.wordpress.com



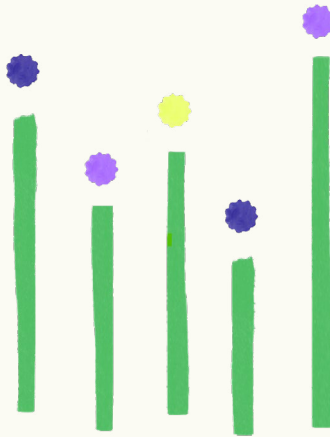
**Weardale Together
(Weardale)**
Creative Connection
weardaletogether.co.uk



cultivate commissions

in numbers

20
creative
practitioners
commissioned



20
different projects
delivered across
County Durham

168
activities and
events took place

across
15
different areas of
County Durham

205
freelancers
involved

2273

people directly
took part in
activity across
County Durham

12,608

people were engaged
with the work created
during this project

105

organisations
or venues were
supported through
this project

6

information and
reflective sessions
were built into the
project...

41

individuals and partners
from the cultural sector
in County Durham
attended LOVE Culture

...with over

210

creatives
finding out more
and making
connections

Through this process of
cultivation, three key themes
emerged, each offering valuable
insights and opportunities for
future growth:

Nurturing Relationships (page 14)

**Building Space and Conditions for
Creativity** (page 16)

**Developing and Growing the Cultural
Sector** (page 18)

Key themes

Nurturing Relationships

Relationships cultivated through this process have enabled supportive networks. It has been encouraging to see how Cultivate Commissions has helped act as a catalyst for the growth of work beyond the scope of the project itself. In many cases meaningful relationships and connections developed and have led to increased participation and co-creation that has lasted beyond the life of the project.

Letting roots grow:

The Cultivate Commissions project encouraged creative practitioners to test, try, reflect and refine aspects of their practice to support others to examine, express and explore what matters to them as part of this process. The cohort of artists considered their own practice and their personal creative capacity alongside each other, and were supported with structured reflection moments within the project to help develop thinking. This project enabled crucial networks and support systems within the sector to establish and help develop practice through an action learning style approach.

Deep roots support strong growth:

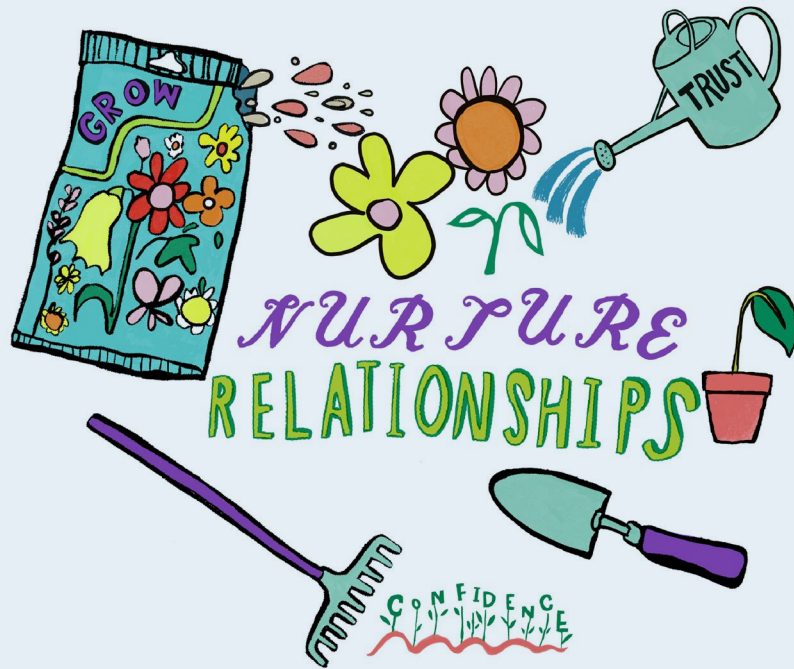
Cultivate Commissions has demonstrated the power of relationship building as a vital part of work that encourages cultural participation and creativity. Relationship building and establishing trust takes time. This project has highlighted the need for trusting and supportive relationships that develop over time before anticipating potential creative outputs.

Cross pollination:

Feedback shows that the project has enabled creative practitioners from different disciplines, backgrounds and levels of experience to engage with individuals from different sectors and across a diverse range of communities in new ways to exchange ideas and work together. In many cases this has led to new projects or initiatives developing beyond the life of this project. This approach appears to have worked particularly well where there has been an understanding of the shared benefits for all parties.

Seasonal challenges:

Specific details like funding timelines and allocated resources can affect the opportunity for growth. Many creative practitioners expressed the desire for longer lead-in time for future projects to support the vital relationship-building work required to make activity like this successful. This included time to make connections with possible venues, community groups or individuals and better understand the needs of those you may wish to work alongside or make an invitation to.



“ This project has created an opportunity for me to develop relationships with staff, volunteers, the community and participants in the area. I personally feel relationships are central to working in a socially engaged way so this is really valuable for me both in delivering this project and creating opportunities for future work...

Sarah Stamp

“ It has also meant we could work with artists in a new way and bring artists together to work towards a collective event.

Weardale Together

“ Absolutely loved it - thank you. Really nice to bring everyone together to get creative and uplift one another.

Participant

“ I'd say it feels like a little community, a lot of like-minded yet different people, all on the creative spectrum and just harmonizing ideas. It's friendships, it's conversations...

Participant

Key themes

Building Space & Conditions for Creativity

This includes ideas around telling and hearing stories, amplifying voices of local people and what it might mean to take part in arts activity including in terms of increased confidence to express ideas, see things from different perspectives and imagine or create new possibilities.

Climate conditions:

Like all living and evolving things, creative processes require appropriate conditions to thrive.

Many of the Cultivate Commissions projects have explored the types of environments where creativity can emerge, flourish and develop. This has included the role played by practitioners in modelling and enabling creativity itself rather than perhaps forcing or constraining enquiry with particular outputs in mind.

Microclimates:

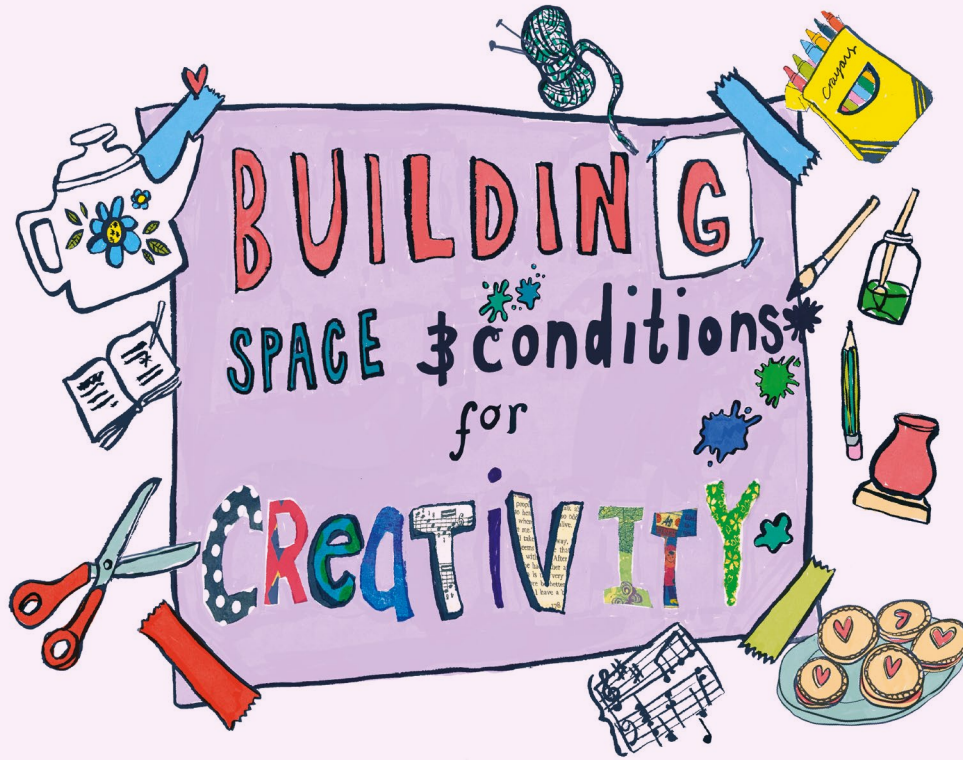
Feedback and evaluation identified some of the features that particular environments can encourage and support for groups and individuals to realise ideas and to flourish. Sometimes this includes considering the way we create spaces to gather, who is included, how and what is required, especially understanding needs of individuals that are not always met, understood or factored in (including spaces for Neurodiversity and the LGBTQIA+ community for example). Creative practitioners carefully considered the conditions required to be welcoming, inclusive and as accessible as possible for those involved.

Climate adaptation:

The project offered structured support for creative practitioners throughout the programme. Guidance, advice and signposting was made available as well as the opportunity to attend six structured reflective practice sessions. The sessions supported practitioners to consider ways they might adjust their plans and respond to needs and circumstances they were encountering. Getting comfortable with the practitioners' own creativity emerged as an important feature. How are we modelling creativity? What does this look like? How comfortable are we tolerating uncertainty or stepping back from fixed ideas to see what can emerge? How often do we focus on and share our processes in development as well as potential artistic outputs or products?

Permaculture principles:

During Cultivate Commissions, a bit like permaculture, creative practitioners explored ways of working that could enable the confidence, skills and creativity in others so this can grow beyond the project, and those involved can continue to develop their own resources and apply their ideas and creative capacity in multiple ways.



“ It was a fun night. Light-hearted. It’s been a hard year, so it was lovely to go out and do something that made me feel part of a group. We wrote a poem together which I didn’t expect from a performance. I loved all the music and the poetry was very interesting. Proud to be from County Durham after that.

Participant

“ Fantastic morning! Really informative and made me rethink the historic importance of our rivers.

Participant

“ Today made me feel... connected, uplifted, hopeful, a sense of togetherness and shared humanity.

Participant

“ I’ve experimented with ways of including people who are neurodivergent that work for them, especially when there are mixed needs in one workshop. This has allowed an emergent new direction in my practice to accelerate, and I am now applying this in my online creative writing courses.

Kate Fox

Key themes

Developing and Growing the Cultural Sector

Just as gardens and landscapes take seasons - if not years - to develop, cultural development requires a long term perspective and investment too. This includes nurturing those who work in the sector and making sure that the ways in which we work have a positive impact on communities, creative practitioners themselves and the sector as a whole, and thus provide wider social, economic and environmental benefits for all.

Making routes and pathways available and accessible:

Evidence shows how vital it is to invest in the capacity of people, creative practitioners and organisations for creativity to thrive. Improving access and equality of creative opportunity encourages fertile spaces to flourish. The Cultivate Commissions project highlights the value of cultural and creative education, inspiring and widening access for children and young people, challenging perceptions of what arts and culture means and 'who it is for/includes' and what it means to work within the sector in order to help break down barriers to sustain and increase the capacity of the sector.

Intentional spaces for reflection and learning:

Intentionally building in reflection and shared learning opportunities into projects that focus on process and methodology as well as the creative output can reap many benefits. Supporting skills and capacity within creative practitioners will strengthen the sector and careers within the sector to become more sustainable and perceived as viable.

Tending to the sector to ensure future growth:

It is important to nurture, nourish and tend the sector so it can be strong, robust and resilient and so deliver many benefits for society. This includes ensuring appropriate rates of pay and conditions for creative practitioners to thrive, capturing evidence of the impact, and advocating for the benefits that arts and creative activity can have - within and beyond the sector.



DEVELOPING
and
-Growing
the CULTURAL SECTOR



“ The commission massively helped me develop my creative practice because I was trying something new. I had presented in-person and facilitated workshops online, but not facilitated any workshops in person, which was what the commission allowed me to do.

Emory Southwick

“ I feel like I’ve grown in confidence as an artist through the project, developing my ability to speak about my project and my work and successfully guide participants through a project during workshops.

Zara Worth

“ Today made me feel... optimistic that the arts and cultural heritage is an important aspect of modern society.

Participant

Harvesting the Benefits

The Cultivate Commissions project has sown seeds of creativity, community engagement and collaboration across our region. The lasting impact is clear to see, that not only wonderful artwork and activity has been generated, but deeper connections, confidence and resilience has been cultivated within creative practitioners, partners and communities.

The following headlines highlight key successes from the project, ensuring that the energy and insights from Cultivate Commissions can help shape future opportunities.

Strengthened relationships / Fruitful collaborations

Benefits: the ability to use these collaborations as a foundation to increase and deepen further cultural participation and connect new partners, funders and policymakers.

“ It has helped me foster relationships... as well as find many new queer creatives around the county. I have also set up my own company to run more sober events for queer people in the North East.

Emory Southwick



Enhanced creative practitioner skills & confidence

Benefits: Developing a more resilient and diverse range of 'socially engaged' practitioners more equipped to effectively respond to social, economic, and environmental challenges and changing circumstances.

“ I pushed myself into a new medium by experimenting with sound design to create soundscapes. This has allowed me to explore a different area of performance and creative expression while giving me time to produce a small body of work.

Lizzie Lovejoy





“ This project has been my most ambitious participatory project to date, engaging more people than I have ever worked with before. It has provided an opportunity to connect with new community groups and organisations, and to get to know Bishop Auckland through the eyes of its communities.

Zara Worth





Increased participation

Benefits: Not forcing outputs but creating conditions for a range of ideas, expressions and outcomes to emerge. Recognising and supporting diversity within our communities (geographic and of interest) finding ways to offer different forms of support to help everyone to engage and express interests.

“ So great to have space and time to get arty and play around with techniques and reflect.

Participant

“ It could definitely be the stepping stone to bigger projects.

Elaine Vizor

Enhanced 'pride of place' and increased creative confidence

Benefits: Evidence of the value and role of arts and creativity to strengthen and support communities.

“ The workshop was really fun and made me feel proud to be part of Durham. **Participant**

“ The performance was a special day for everyone – a charge of something is about to happen and we don't know what. We only knew that we had been dedicated to the creative and practice process and now we would see what would happen. **Scarlet Hall**

“ Being asked to take part in this project has been very enjoyable and hope something else comes along in the future. **Participant**

“ I had never made ceramics before this workshop and completely fell in love with the medium. I've already ordered a home pottery kit. I was quite nervous to begin with because it was all new. **Participant**





Continuing the Cycle

Recommendations and next steps

Documenting methods and sharing learning

Tools, resources and practices have been developed throughout the Cultivate Commissions project that have contributed to successful partnership, collaboration and co-creation models. Sharing resources, documents and practice could encourage further collaboration and support long term engagement and relevance.

Investing further in capacity building and professional development for creative practitioners

Creative practitioners bring a wealth of skills, ideas, tools, and innovative approaches that can add value and bring about positive change within society. The project successfully combined the delivery of commissioned activity with action learning style activity, reflection and adaptation. Investing in the skills, strengths and capacity of creative practitioners is an investment in ways of working, ways to engage and enlivening wider participation and community development. Commissioners building in deliberate cultivation and reflection opportunities into projects and programmes can allow space for growth and can develop programmes that have a strong sense of community ownership, creation and legacy.

Cultivation is an ongoing process. To build on the success and learning from the Cultivate Commissions project some of the following points may wish to be considered for future work.

“ This project allowed me to finally build an idea that’s been rattling around for a long time! It was a privilege to bring it to life in a bustling shopping centre and engage a diverse cross-section of the community. The unique setting introduced me to new participants and broadened my understanding of audience engagement in non-traditional art spaces.

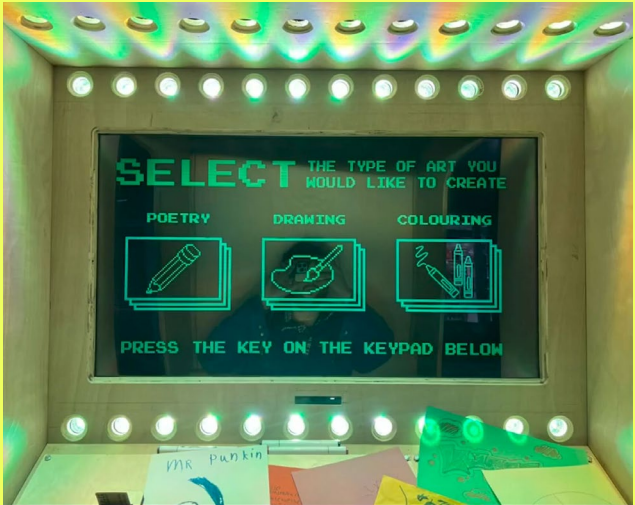
Joe Bunce

Investing in longer term funding allowing relationships to develop and for practice to embed over time

To continue building momentum and be best placed to weather inevitable changing conditions and challenges beyond our control, the sector requires nurturing, reserves and long term investment. Seed, Germinate and Harvest commissions supported new growth and enabled connections with communities and organisations from often underrepresented voices or areas encouraging resources to be more evenly distributed and flow to areas where they may be most needed or can have the greatest impact.

“ I needed to spend time liaising with new groups instead and setting up connections which took extra time, but was ultimately beneficial and allowed me to properly foster a strong relationship with these groups.

Lizzie Lovejoy

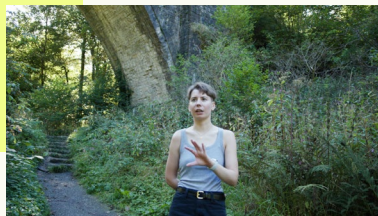


Identifying areas for further development and expansion, particularly alongside underserved communities and cultivating creativity

Use the Cultivate Commissions project as a model to demonstrate how creative engagement and cultural participation can positively impact communities of interest and geographies. Understand and build on the interests and 'pride' people have in themselves and about their local community.

“ What emerged was a picture of deep love for the beautiful natural landscapes of the area and the community spirit still alive in the former colliery towns and villages, alongside huge pride in its incredible industrial history.

Matt James Smith



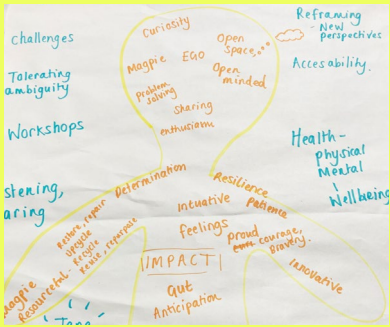
“ I believe this project made everyone involved feel like an important part of something meaningful.

Cloe Sparrow

“ It means I can find that ground to be with something which belongs to me but also, I belong to it. It's healing, It's anchoring. It provides a base from which I feel like I can face other things in life more securely.

Participant

We can already see evidence that Cultivate Commissions has supported growth and opportunity, encouraging confidence and connectivity within the sector at a rapid pace. Cultivate Commissions, as part of the Durham Into the Light Place Partnership, has provided progression routes alongside opportunities for jobs and careers by making the role of creative practitioners/artists visible. This opportunity has seen the Cultivate Commissions Cohort connect with and collaborate across other projects as part of Into the Light, in particular the Place Lab project and 'Light Years', where creative practitioners have been commissioned to lead work. Through this work communities have been enabled to shape policy and decision making and have a positive impact on economic growth.



Find out more

The Cultivate Commissions project is a part of the Into the Light Durham Place Partnership Programme.

Cultivate Commissions webpage

(hosted by No More Nowt)

nomorenowt.org/cultivate-commissions

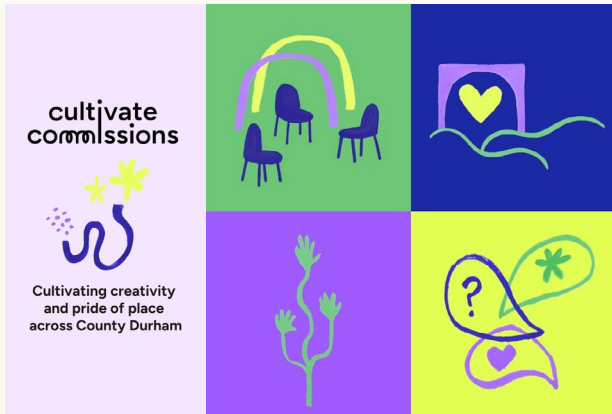
Northern Heartlands

northernheartlands.org

Culture Durham and Into the Light

culturedurham.org.uk/into-the-light

Cultivate films



[In the Beginning](#)



[Film 2](#)



[Film 3](#)

Acknowledgements

Project Leads - No More Nowt and Northern Heartlands

Report written by Katy Milne, Northern Heartlands and edited by Jess Hunt, No More Nowt and Jill Cole, Northern Heartlands.

Design by Sally Pilkington, Morph Creative

Illustrations by Bethan Laker

Film by Carl Joyce, Coalfield Studios

Programme support by Jane Shaw, Create North

LOVE Culture Creative Facilitators Rachel Eleanor Brook and Natalie Querol

The sample of quotes were provided by creative practitioners and participants, unfortunately there was not room to feature them all! Thank you to all of the Cultivate Commissions creative practitioners.

Thank you to all partners, venues and groups and a big thank you to all of the participants and residents of County Durham.

Glossary of terms

Many terms are used in the arts and cultural sector, each can mean a range of things to different people and be understood and applied in different and nuanced ways. To support understanding in this report, we are using the following definitions of the terms below.

The terms used in this report and definitions below are only one way of understanding their meaning and this also varies depending on their use in different contexts. This is not an exclusive or exhaustive list of terms or definitions used but hopefully a useful glossary that offers further insight into our thinking when using these terms as part of this Cultivate Commissions report.

Cultural participation: The Arts Council uses a broad definition of 'culture', encompassing all areas of activity associated with the art forms and organisations which they invest in including collections, combined arts, dance, libraries, alliteration, museums, music, theatre and visual arts.

Open call process: unlike closed or invitation only processes, open calls are open to anyone who meets the stated criteria and requirements regardless of their background or connections. An open call opportunity is promoted and publicised widely and through a range of mechanisms and networks for a reasonable period of time for those interested to identify the opportunity, find out more and apply.

Socially engaged practitioners: Practitioners are responsible for creating a culture that fosters generative, safe and equitable relationships for a range of voices, ideas and outputs to be expressed. Practitioners prioritise community involvement and

social impact, often working collaboratively with people and communities to address social issues and foster positive change through creative practices that enable creativity to thrive.

Creative capacity: dispositions defined by research undertaken by Creativity, Culture and Education and The Centre for Real World Learning that include: collaboration, discipline, imagination, inquisitiveness and persistence.

Action learning style approach: a dynamic, experiential approach to learning and problem solving where individuals work on real world issues/activity and share reflections on their experiences and actions to improve understanding, practice and outcomes.

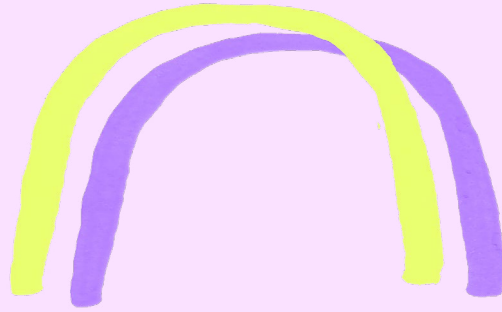
Micro climates: the climate of a small or restricted area, especially when this may differ from the climate of the surrounding area.

Permaculture: the development of (agricultural) ecosystems intended to be sustainable and self-sufficient. A term attributed to Bill Mollison and David Holmgren in the 1970's.

Permaculture principles: considers the interconnectedness of all elements of a structure, aiming to work with what exists, create systems that can self sustain, adapt and be resilient.

Ecosystems: a complex network or interconnected system.

Communities of interest: a group of people who share common interests, passions, or identities that come together to share information, offer support/address issues related to those interests.



cultivate commissions



Supported using public funding by
**ARTS COUNCIL
ENGLAND**

CultureDurham

Visit **County
Durham**